

# Fellowes

# Electric Premium Comb Binder

## Galaxy e 500



Please read these instructions before use.

Lire ces instructions avant utilisation.

Lea estas instrucciones antes de usarlo.

Diese Anleitungen vor Gebrauch genau durchlesen.

Prima dell'uso, si raccomanda di leggere questo manuale di istruzioni.

Dese instructies voor gebruik lezen.

Läs dessa anvisningar innan du använder apparaten.

Læs venligst denne vejledning før anvendelse.

Lue nämä ohjeet ennen käyttöä.

Vennligst les nøye igjennom denne bruksanvisningen før bruk.

Przed użyciem proszę zapoznać się z tą instrukcją.

Перед началом эксплуатации обязательно прочтите данную инструкцию.

Παρακαλείσθε να διαβάσετε αυτές τις οδηγίες πριν χρησιμοποιήσετε το προϊόν.

Kullanmadan önce lütfen bu talimatları okuyun.

Před použitím si přečtěte tyto pokyny.

Pred použitím si prečítajte tieto pokyny.

Kérjük, hogy használat előtt olvassa el az utasításokat!

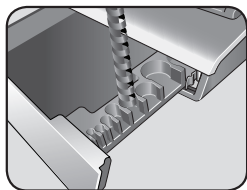
Leia estas instruções antes da utilização.

[fellowes.com](http://fellowes.com)

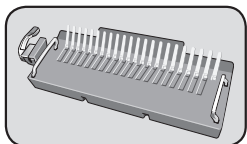
# ENGLISH



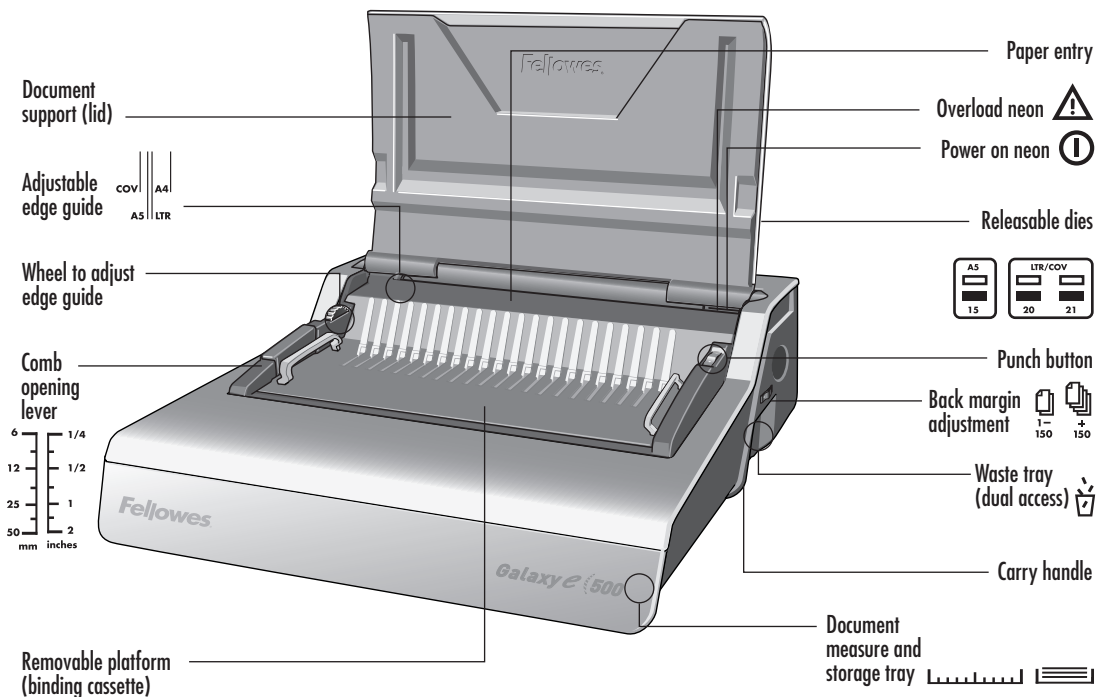
Releasable dies



Comb storage and Document measure



Removable platform (binding cassette)



## CAPABILITIES

### Punching Capacity

Paper sheets	
70-80g / 20lb	25 sheet
Transparent Covers	
100-200 micron / 4-8 mil	4 sheet
200+ micron / 8+ mil	3 sheet
Other Standard Covers	
160-270g / 40-60lb	4 sheet
270+g / 60+ lb	3 sheet
Binding Capacity	
Max comb size	51mm
Max document (80g / 20lb)	c. 500 sheet

### Technical Data

Paper dimensions	A4, A5, US letter, US cover
Punching slots	21
Releasable dies	3 dies (15, 20, 21)
Adjustable back margin	yes - 2 positions (min = 2.5mm, max = 4.5mm)
Slot pitch	9/16" / 14.28mm
Adjustable edge guide	yes- rotary
Waste tray capacity	c. 3000 sheets
Voltage	220-240V 50/60 Hz
Motor wattage	160W 1.0A
Duty Cycle	30 mins on / 30 mins off
Net weight	9.8 kg / 21.6 lb
Dimensions (LxDxH)	20.9" x 17.7" x 6.5" / 530 x 450 x 165mm

## IMPORTANT SAFETY INSTRUCTIONS — Read Before Using!



Please read before use. Please keep for future reference.

### When punching;

- always ensure the machine is on a stable surface
- test punch scrap sheets and set the machine before punching final documents
- remove staples and other metal articles prior to punching
- never exceed the machines quoted performance

### When binding;

- the removable binding platform can be used away from the punch unit
- always ensure the removable binding platform is on a stable surface

Keep the machine away from heat and water sources.


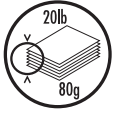


Never attempt to open or otherwise repair the machine.

Plug the machine into an easily accessible socket.

Note - this machine features a thermal cut-out device which activates when the machine is overheated during use. It will automatically reset when the machine is safe to operate.

## COMB DIAMETER & DOCUMENT SIZES

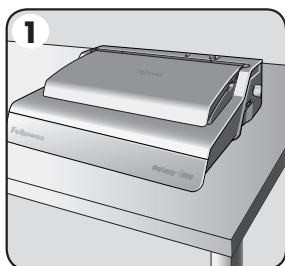
### Comb diameter sizes

			Set back margin
mm	inch	number of sheets	
6mm	1/4"	2-20	 1-150
8mm	5/16"	21-40	
10mm	3/8"	41-55	
12mm	1/2"	56-90	
16mm	5/8"	91-120	
18mm	1 1/16"	121-150	
22mm	7/8"	151-180	 +150
25mm	1"	181-200	
32mm	1 1/4"	201-240	
38mm	1 1/2"	241-340	
45mm	1 3/4"	341-410	
51mm	2"	411-500	

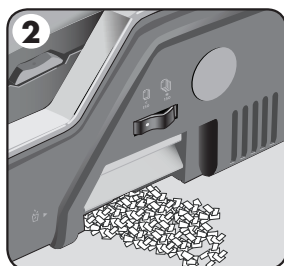
### Need Help?

Customer Service... [www.fellows.com](http://www.fellows.com)  
Let our experts help you with a solution.  
Always call Fellows before contacting your  
place of purchase.

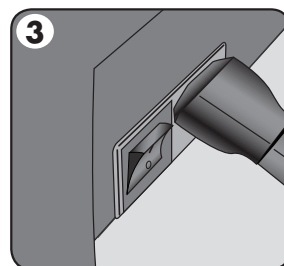
## SET UP



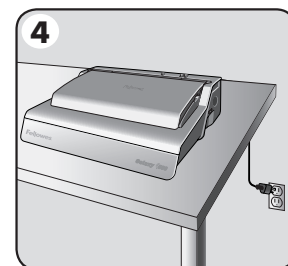
1. Ensure the machine is on a stable surface.



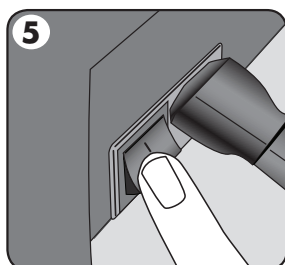
2. Check waste tray is empty and correctly fitted. The tray can be accessed from the left and right sides. The tray has a 'burst feature' that operates when the chip tray is 'over-full'.



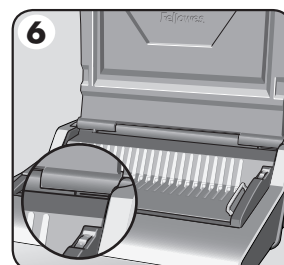
3. The machine is supplied with loose power leads. Select the correct lead for appropriate power supply.



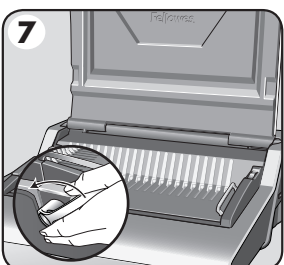
4. Plug the lead into grounded socket outlet.



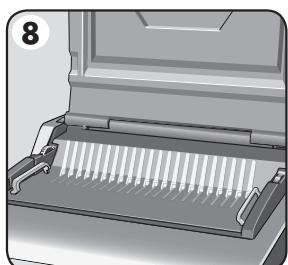
5. Switch the machine on (located at the rear of the machine).



6. Lift the lid. Check the green power neon is on.



7. Ensure the comb-opening lever is pushed backwards.

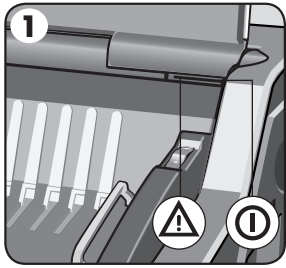


8. Ensure the binding platform is located correctly in the machine.

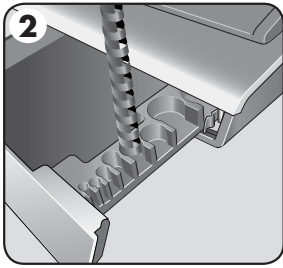


# ENGLISH

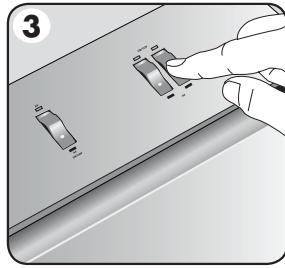
## STEPS TO BIND



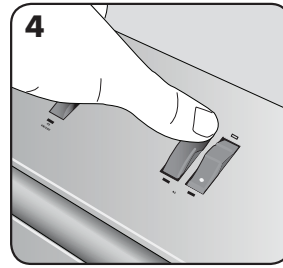
1. Check the green power neon is on.



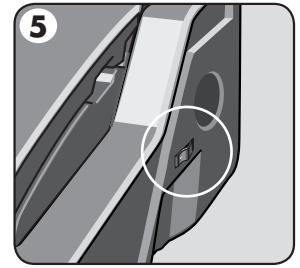
2. Select the correct comb diameter using the storage tray.



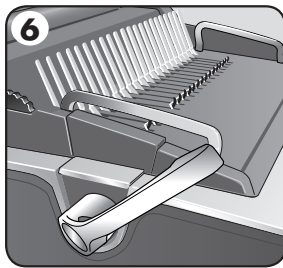
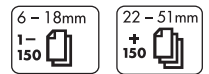
3. Select the correct punch profile for the sheet size. Select releasable dies as appropriate (holes 15, 20, 21).



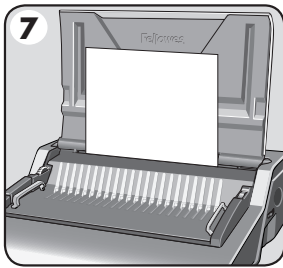
4. To cancel a punch, press the switch down at the back. Test punch a sheet.



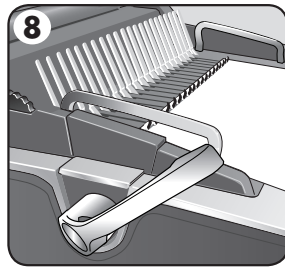
5. Select the correct back margin depth for number of sheets.



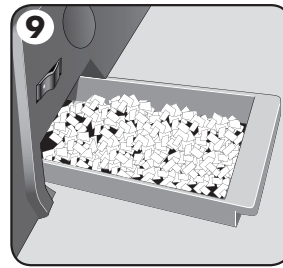
6. Insert the plastic comb into the opening mechanism. Pull comb-opening lever forward to open the comb.



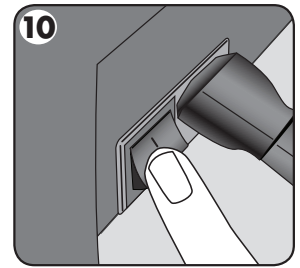
7. Test punch scrap sheets to check edge guide setting.



8. Load punched sheets directly onto the open comb.

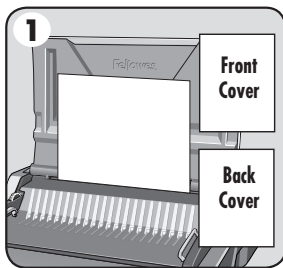


9. Empty waste tray regularly - ideally after each use.

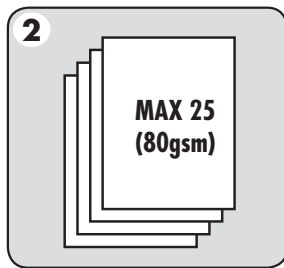


10. Switch off the machine.

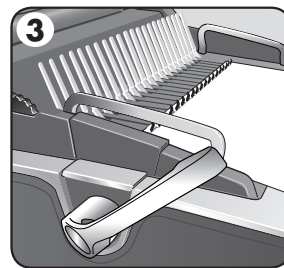
## DOCUMENT BINDING



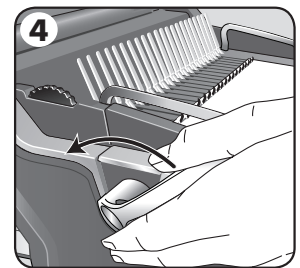
1. Punch front and back covers first.



2. Punch sheets in small batches that do not overload the machine or the user.



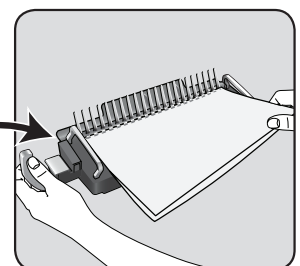
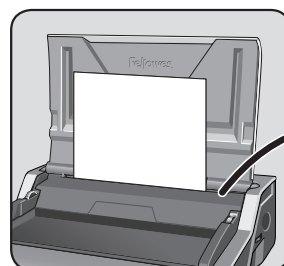
3. Load punched sheets directly onto the opened comb. Starting with the front of the document.



4. When all punched sheets are loaded onto the comb, push the comb lever backwards to close the comb and remove the bound document.

## REMOVABLE BINDING PLATFORM

Galaxy has a unique mobile binding platform. The platform can be lifted from the base and used on a stable surface to bind documents using the normal binding procedure and also allows different users to work together. When not in use, the platform should be stored safely in the punch machine.



**Satellite**<sup>®</sup>  
SYSTEM

## CORRECTING A BOUND DOCUMENT

Additional sheets may be included or removed at any time by opening and then closing the comb as previously described.

## REMOVAL OF WASTE CLIPPINGS

The waste tray is located under the machine and is accessed from each side. For best results empty the tray regularly. The tray should be emptied after every 50 operations to ensure no blockages occur.

## STORAGE

Lower the lid. The Galaxy comb binder is designed to be stored horizontally on the desk.

## TROUBLESHOOTING

Problem	Cause	Solution
No Green power neon	Machine is not switched on	Switch on machine at rear next to plug inlet and at the socket
Red standby neon	Machine has overloaded when punching	Press the punch button. The machine will withdraw the punches and re-set itself. Continue this process until the punch cycle is complete
Punched holes are not central	Edge guide not set	Adjust edge guide until hole pattern is correct
Machine will not punch	Blockage	Check waste tray in empty. Check for blockage to paper entry
Punch holes are not parallel to edge	Debris is stuck below dies	Take stiff cardboard and slide into the paper entry. Move the cardboard sideways to release any stray clippings into the waste tray
Partial holes	Sheets not correctly aligned to punch pattern	Adjust edge guide and test punch scrap sheets until correct
Missing holes	Selectable dies are not selected to punch	Check the correct dies are selected to punch holes. To select a die, push selector switch down at the front
Sheets will not turn on the bound document	Back margin is too large for a smaller comb	Select the smaller margin depth for combs up to 18mm (11/16") in diameter (2-150 sheets) Select the larger margin depth for combs larger than 18mm (11/16") in diameter (151-500 sheets)
Damaged hole edges	Possibly overloading the machine	Punch plastic covers with paper sheets. Reduce number of sheets being punched
Waste tray leaks	Waste tray is not correctly inserted or 'burst feature' has activated	Check waste tray is empty and 'burst feature' is closed

## WORLDWIDE WARRANTY

Fellowes warrants all parts of the binder to be free of defects in material and workmanship for 2 years from the date of purchase by the original consumer. If any part is found to be defective during warranty period, your sole and exclusive remedy will be repair or replacement, at Fellowes' option and expense, of the defective part. This warranty does not apply in cases of abuse, mishandling or unauthorised repair. Any implied warranty, including that of merchantability or fitness for particular purpose, is hereby limited in duration to the appropriate

warranty period set forth above. In no event shall Fellowes be liable for any consequential damages attributable to this product. This warranty gives you specific legal rights. You may have other legal rights that vary from this warranty. The duration, terms and conditions of this warranty are valid worldwide, except where different limitations, restrictions or conditions may be required by local law. For more details or to obtain services under this warranty, please contact Fellowes or your dealer.

## English

This product is classified as Electrical and Electronic Equipment. Should the time come for you to dispose of this product please ensure that you do so in accordance with the European Waste of Electrical and Electronic Equipment (WEEE) Directive and in compliance with local laws relating to this directive.

For more information on the WEEE Directive please visit [www.fellowesinternational.com/WEEE](http://www.fellowesinternational.com/WEEE)

---

## French

Ce produit est classé dans la catégorie « Équipement électrique et électronique ». Lorsque vous décidez de vous en débarrasser, assurez-vous d'être en parfaite conformité avec la directive européenne relative à la gestion des déchets d'équipements électriques et électroniques (DEEE), et avec les lois de votre pays liées à cette directive.

Pour obtenir des plus amples informations sur cette directive, rendez-vous sur [www.fellowesinternational.com/WEEE](http://www.fellowesinternational.com/WEEE)

---

## Spanish

Se clasifica este producto como Equipamiento Eléctrico y Electrónico. Si llegase el momento de deshacerse de este producto, asegúrese que lo hace cumpliendo la Directiva Europea sobre Residuos de Equipamiento Eléctrico y Electrónico (Waste of Electrical and Electronic Equipment, WEEE) y las leyes locales relacionadas con esta directiva.

Para más información acerca de la Directiva WEEE, visite [www.fellowesinternational.com/WEEE](http://www.fellowesinternational.com/WEEE)

---

## German

Dieses Produkt ist als Elektro- und Elektronikgerät klassifiziert. Wenn Sie dieses Gerät eines Tages entsorgen müssen, stellen Sie bitte sicher, dass Sie dies gemäß der Europäischen Richtlinie zu Sammlung und Recycling von Elektro- und Elektronikgeräten (WEEE) und in Übereinstimmung mit der lokalen Gesetzgebung in bezug auf diese Richtlinie tun.

Mehr Informationen zur WEEE-Richtlinie finden Sie unter: [www.fellowesinternational.com/WEEE](http://www.fellowesinternational.com/WEEE)

---

## Italian

Questo prodotto è classificato come Dispositivo Elettrico ed Elettronico. Al momento dello smaltimento di questo prodotto, effettuarlo in conformità alla Direttiva Europea sullo Smaltimento dei Dispositivi Elettrici ed Elettronici (WEEE) e alle leggi locali ad essa correlate.

Per ulteriori informazioni sulla Direttiva WEEE, consultare il sito [www.fellowesinternational.com/WEEE](http://www.fellowesinternational.com/WEEE)

---

## Dutch

Dit product is geclassificeerd als een elektrisch en elektronisch apparaat. Indien u besluit zich te ontdoen van dit product, zorg dan a.u.b. dat dit gebeurt in overeenstemming met de Europese richtlijn inzake afval van elektrische en elektronische apparaten (AEEA) en conform de lokale wetgeving met betrekking tot deze richtlijn.

Voor meer informatie over de AEEA-richtlijn kunt u terecht op [www.fellowesinternational.com/WEEE](http://www.fellowesinternational.com/WEEE)

---

## Swedish

Denna produkt är klassificerad som elektrisk och elektronisk utrustning. När det att dags att omhänderta produkten för avfallshantering se då till att detta utförs i enlighet med WEEE-direktivet om hantering av elektrisk och elektronisk utrustning och i enlighet med lokala bestämmelser relaterade till detta direktiv.

För mer information om WEEE-direktivet besök gärna [www.fellowesinternational.com/WEEE](http://www.fellowesinternational.com/WEEE)

---

## Danish

Denne produkt er klassificeret som elektrisk og elektronisk udstyr. Når tiden er inde til at bortskaffe denne produkt, bedes De sørge for at gøre dette i overensstemmelse med det Europæiske direktiv om affald af elektrisk og elektronisk udstyr (WEEE) og i henhold til de lokale love, der relaterer til dette direktiv.

For yderligere oplysninger om WEEE-direktivet bedes De besøge [www.fellowesinternational.com/WEEE](http://www.fellowesinternational.com/WEEE)

---

## Finnish

Tämä tuote luokitellaan sähkö- ja elektroniikkalaitteeksi. Kun tuote poistetaan käytöstä, se on hävitettävä sähkö- ja elektroniikkalaiteromusta annetun EY:n direktiivin (WEEE) ja direktiiviin liittyvän kansallisen lainsäädännön mukaisesti.

Lisätietoja WEEE-direktiivistä on osoitteessa [www.fellowesinternational.com/WEEE](http://www.fellowesinternational.com/WEEE)

---

---

## Norwegian

Dette produktet klassifiseres som elektrisk og elektronisk utstyr. Hvis du har tenkt å bortskaffe dette produktet, vennligst se til at du gjør dette i overensstemmelse med det europeiske WEEE-direktivet (Waste of Electrical and Electronic Equipment) og ifølge lokalt lovverk forbundet med dette direktivet.

For mer informasjon om WEEE-direktivet, vennligst besøk [www.fellowesinternational.com/WEEE](http://www.fellowesinternational.com/WEEE)

---

## Polish

Ten produkt został zaklasyfikowany do grupy urządzeń elektrycznych i elektronicznych. W celu pozbycia się zużytego sprzętu będącego w Państwa posiadaniu należy postępować zgodnie z Europejską Dyrektywą w sprawie zużytego sprzętu elektrycznego i elektronicznego (WEEE) oraz z lokalnie obowiązującym prawem.

Więcej informacji znajdziecie Państwo na stronie [www: www.fellowesinternational.com/WEEE](http://www.fellowesinternational.com/WEEE)

---

## Russian

Данное изделие классифицировано как электрическое и электронное оборудование. Когда придет время утилизировать данное изделие, пожалуйста, обеспечьте соблюдение Директивы Евросоюза об утилизации отходов электрического и электронного оборудования (Waste of Electrical and Electronic Equipment, WEEE) и местных законов, связанных с ней.

Для получения дополнительной информации о директиве WEEE, пожалуйста, посетите веб-сайт [www.fellowesinternational.com/WEEE](http://www.fellowesinternational.com/WEEE)

---

## Greek

Αυτό το προϊόν είναι ταξινομημένο ως Ηλεκτρικός και Ηλεκτρονικός Εξοπλισμός. Σε περίπτωση που θέλετε ν' απορρίψετε αυτό το προϊόν, παρακαλείσθε να βεβαιωθείτε ότι κάνετε την απόρριψη σύμφωνα με την Ευρωπαϊκή Οδηγία σχετικά με τα Απόβλητα Ηλεκτρικού και Ηλεκτρονικού Εξοπλισμού (WEEE) και σύμφωνα με τους τοπικούς νόμους που σχετίζονται μ' αυτή την οδηγία.

Για περισσότερες πληροφορίες σχετικά με την Οδηγία WEEE, παρακαλείσθε να επισκεφτείτε την ιστοσελίδα [www.fellowesinternational.com/WEEE](http://www.fellowesinternational.com/WEEE)

---

## Turkish

Bu ürün, Elektriksel ve Elektronik Ekipman olarak sınıflandırılmıştır. Bu ürünü bertaraf etme zamanı geldiğinde, lütfen bunun Avrupa Elektriksel ve Elektronik Ekipmanların Atılması (WEEE) Yönetmeliği ve bu yönetmele ilgili yerel kanunlar uyarınca yapıldığından emin olun.

WEEE Yönetmeliği hakkında daha fazla bilgi için lütfen [www.fellowesinternational.com/WEEE](http://www.fellowesinternational.com/WEEE) sitesini ziyaret edin

---

## Czech

Tento výrobek je klasifikován jako elektrické a elektronické zařízení. Po skončení jeho životnosti zajistěte jeho likvidaci v souladu se Směrnicí 2002/96/ES o odpadu z elektrických a elektronických zařízeních (OEEZ) a v souladu s místními předpisy, které s touto směrnicí souvisí.

Více informací o směrnici OEEZ najdete na stránkách [www.fellowesinternational.com/WEEE](http://www.fellowesinternational.com/WEEE)

---

## Slovak

Tento produkt je klasifikovaný ako elektrické a elektronické zariadenie. Ak nastane čas zlikvidovať tento produkt, zabezpečte, prosím, aby ste tak urobili v súlade s Európskou smernicou o odpade z elektrických a elektronických zariadeniach (WEEE) a v zhode s miestnymi zákonmi vzťahujúcimi sa na túto smernicu.

Podrobnejšie informácie o Smernici WEEE nájdete na [www.fellowesinternational.com/WEEE](http://www.fellowesinternational.com/WEEE)

---

## Hungarian

Ez a termék Elektromos és elektronikus berendezés besorolású. Ha eljönne az idő, amikor ki kell dobni a terméket, akkor kérjük, gondoskodjon arról, hogy ezt az Európai elektromos és elektronikus berendezések hulladékáról szóló (WEEE) irányelv szerint tegye, megfelelően az irányelvhez kapcsolódó helyi törvényeknek is.

A WEEE Irányelvvel vonatkozó további információért kérjük, keresse fel a [www.fellowesinternational.com/WEEE](http://www.fellowesinternational.com/WEEE) internetes címet

---

## Portuguese

Este produto está classificado como Equipamento Eléctrico e Electrónico. Quando chegar a altura de eliminar este produto, certifique-se de que o faz em conformidade com a Directiva relativa a Resíduos de Equipamentos Eléctricos e Electrónicos (REEE) e em observância da legislação local relativa a esta directiva.

Para obter mais informações sobre a Directiva relativa a Resíduos de Equipamentos Eléctricos e Electrónicos (REEE), visite o endereço [www.fellowesinternational.com/WEEE](http://www.fellowesinternational.com/WEEE)

---



# Useful Phone Numbers

## Declaration of Conformity

### Fellowes Manufacturing Company

Yorkshire Way, West Moor Park, Doncaster, South Yorkshire, DN3 3FB, England declares that the product Model Galaxy-E conforms with the requirements of (RoHS) the Restriction of Hazardous Substances Directive 2002/95/EC. The Low Voltage Directive 72/73/EEC as amended by directive 92/68/EEC. The Electromagnetic Compatibility Directive 89/336/EEC as amended by directives 92/31/EEC & 96/68/EEC. And the following Harmonised European Normes EN standards and IEC standards.

Information Technology Equipment: EN-60950-1 2001 / IEC-60950-1 2001

EMC: EN-55014-1 / A2 : 2002 EN-55014-2 / A1 : 2001 EN-61000-3-2 : 2000 EN-61000-3-3 / A1 : 2001

Itasca, Illinois, USA  
June 30, 2006

*James Fellowes*  
James Fellowes

## Help Line

Australia	+ 1-800-33-11-77
Canada	+ 1-800-665-4339
Europe	00-800-1810-1810

México	+ 1-800-234-1185
United States	+ 1-800-955-0959

## Fellowes

Australia	+ 61-3-8336-9700
Benelux	+ 31-(0)-76-523-2090
Canada	+ 1-905-475-6320
Deutschland	+ 49-(0)-5131-49770
España	+ 34-91-748-05-01
France	+ 33-(0)-1-30-06-86-80
Italia	+ 39-071-730041

Japan	+ 81-(0)-3-5496-2401
Korea	+ 82-2-3462-2884
Malaysia	+ 60-(0)-35122-1231
Polska	+ 48-(0)-22-771-47-40
Singapore	+ 65-6221-3811
United Kingdom	+ 44-(0)-1302-836836
United States	+ 1-630-893-1600



1789 Norwood Avenue, Itasca, Illinois 60143-1095 • USA • 630-893-1600

[fellowes.com](http://fellowes.com)

Australia	Canada	Deutschland	France	Japan	Polska	United Kingdom
Benelux	China	España	Italia	Korea	Singapore	United States